

The Past In Progress

Attendance

The site continued to offer modified services to mill visitors due to social distancing challenges in the mill. During that time, self-guided 1st floor tours were offered.

- Total Visitation- 27,539
- Day Use- 23,178
- Adams-Wilhite Store – 1,408
- First floor mill visitors- 2,953

Special Events

Halloween Storytelling

- Children received treat filled bags and were able to play a part in a story about a Pumpkin Prince including other spooky tales.

Easter Egg Hunt

- This has become a very popular event for the site, bringing many from the local area. This year, 1500 treat filled eggs were hidden.

After the event many families stayed to picnic and visit the mill.

New ramp and deck.

Project total \$2,226



Adams-Wilhite Store Foundation Repair, Artifact Inventory and Cleaning

The foundation log on the Adam-Wilhite Store collapsed due to rot.



Sill Log Replaced

- A contractor who specializes in historic restorations was hired to replace the sill log.

Project total: \$12,300



Water Turbine Inspection and Repair

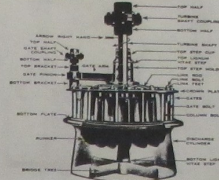
- With assistance from the L.A.D. Foundation an inspection of the 33" Samson Leffel water turbine was made possible.
- The inspection was performed by Canyon Hydro's, Leffel Works Division. They are the experts and the original manufacturer of the mill's turbine.
- Parts needing replaced or repaired were shipped to Springfield, Ohio.

Project totals:
Inspection \$ 4,500
Parts \$ 14,980

THE JAMES LEFFEL & CO

Improved Vertical Runner Turbines

These turbines are built strong and substantial, and equipped with our patented double and triple runners fitted in cast metal. Large top and bottom rings support the runners, the runners are cast in one piece, including the weight of cast iron, aluminum and steel. Each turbine is built to order with special attention to detail. Each part is made to order. All bearings of large dimensions and special materials. Shown complete.



SPRINGFIELD, OHIO, U.S.A.

ESTABLISHED 1862

Turbine parts

Twelve link rods were made.



Top step bearing replaced



Turbine Repairs

Gate Arm Before



After



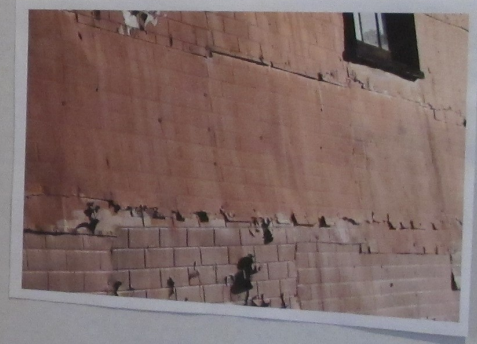
Site Maintenance Conrad Gibbs

- Conrad performed the removal and replacement of the parts.
- Had Canyon Hydro performed the work it would cost \$30,000.00.
- Since the repairs were made, the turbine starts and stops with ease and has gained full horsepower.
- Conrad was recently named team member of the month for his work on this project!



More and Upcoming Projects

- Park entrance sign & cantilever post were replaced. This included masonry work on the stone column supporting the post.
- New interpretive wayside panels are on order and we should be getting these soon. These will replace some of the signs that were installed in 2012.
- Six energy efficient windows were installed on the back porch of the residence. We have additional windows on-hand to completely finish the lower level on the home. Weather permitting, we hope start the project this fall.
- Two mill windows were repaired by the State Wide Construction Crew. They did a fantastic job in replicating the color, sash and muntins. In October, we'll be getting some one-on-one training from the crew so we can learn how to make repairs ourselves.
- Rotten sill plates were replaced on the site office's porch enclosure. The interior walls of the porch were also painted. Weather permitting, we also plan to paint the porch exterior before cold weather arrives.
- A new foot bridge for the Indian Creek crossing will be built over the winter.
- A Capital Improvement project has been funded to paint and replace deteriorated siding on the back side of the mill.



Mill Dam

- It is recommended that an inspection be performed on its structural integrity, develop a plan to address cracks and restore the missing cap on the far right.
- This will be top priority during budget requests for FY24.



Parking Lot Repair and Chip Sealing

Parking lot in need of repair.

West Contracting, awarded to clean out cracks, fill with asphalt and apply chip seal.



Parking Lot Completed

- A natural, colored rock was applied to blend with the surrounding landscape.
- This project has restored the parking area for many more years.

Project total \$ 38,144

- New parking barriers will soon be added.
- In the near future, new landscaping timbers will be applied around various "islands" within the parking lot.



Chip Seal Complete

