

Bennett Spring State Park

BY THE NUMBERS

LOCATION: Dallas and Laclede counties

NUMBER OF ACRES: 3,338.55

NUMBER OF FULL-TIME STAFF: 11

NUMBER OF PART-TIME STAFF: 5

VOLUNTEER HOURS:* 10,250

STEWARDSHIP HOURS: 1,647.50

2023 ATTENDANCE:* 1,280,932

MILES OF TRAIL: 13.8

NUMBER OF STRUCTURES:* 60

MILES OF ROADWAYS:* 6.94

NUMBER OF PROGRAMS PRESENTED:* 181

STATE SALES TAX PAID:* ** \$193,592.20

LOCAL SALES TAX PAID:* ** \$54,434.92

TOTAL SALES TAX: \$248,027.12

BUDGET

SMALL MAINTENANCE & REPAIR BUDGET: \$95,650.00

CAPITAL IMPROVEMENTS PROJECTS IN PROGRESS:* 4

CAPITAL IMPROVEMENTS PROJECTS COMPLETED:* 3

ANNUAL BUDGET: \$758,544

CAMPING & LODGING

NUMBER OF CAMPING NIGHTS SOLD:* 28,505

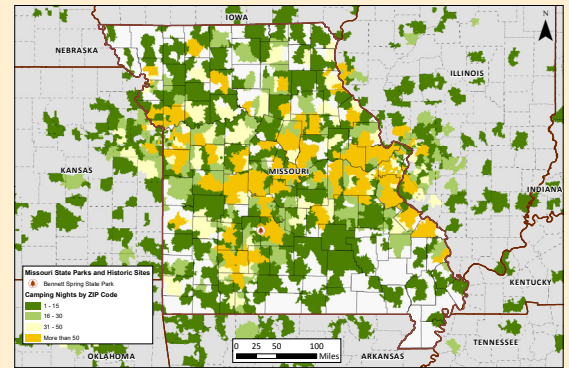
NUMBER OF LODGING NIGHTS SOLD:* † 11,146

NUMBER OF CAMPSITES: 191

NUMBER OF LODGING UNITS:† 65

NUMBER OF OVERNIGHT GUESTS:* † 77,666

CAMPING NIGHTS SOLD BY ZIP CODE: >>>>>>



SPECIAL EVENTS

MISSOURI STATE PARK EVENTS: 8

THIRD PARTY EVENTS: 2

SCHOOL PROGRAMS: 15

PHOTO ALBUM



* All numbers through December 2023. † Information includes park and concession-run operations. ** Estimated park and concession sales tax paid.